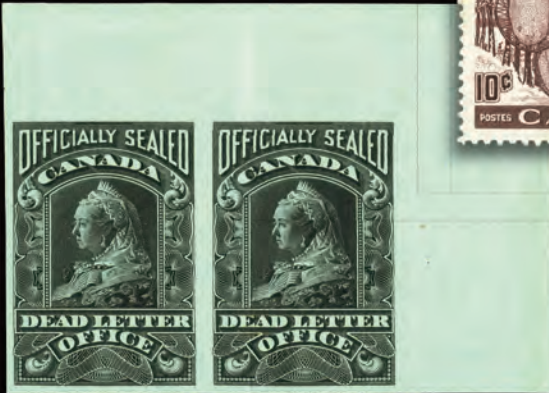


PRICES REALIZED

THE *Brigham* COLLECTION OF CANADA



BACK OF THE BOOK 1875-1978
SHEETS 1857-1957

NOVEMBER 22, 2014
Toronto, Canada

PRICES REALIZED • 11.22.2014
 Back of the Book 1875-1978 & Sheets 1857-1957 • Sale 3



Lot#	Realized	Lot#	Realized	Lot#	Realized	Lot#	Realized	Lot#	Realized	Lot#	Realized	Lot#	Realized
1	1,200	59	1,900	117	280	175	300	233	600	291	150	349	10,500
2	200	60	4,250	118	950	176	1,700	234	1,300	292	140	350	12,500
3	170	61	1,600	119	260	177	120	235	90	293	325	351	8,500
4	100	62	1,400	120	250	178	1,500	236	450	294	50	352	8,500
5	250	63	1,800	121	270	179	200	237	270	295	100	353	16,000
6	140	64	170	122	180	180	325	238	240	296	270	354	325
7	425	65	260	123	270	181	120	239	550	297	180	355	375
8	700	66	130	124	325	182	270	240	4,250	298	65	356	650
9	70	67	550	125	1,000	183	280	241	100	299	100	357	700
10	260	68	625	126	170	184	280	242	350	300	800	358	1,500
11	250	69	550	127	300	185	240	243	425	301	350	359	2,600
12	80	70	550	128	280	186	200	244	425	302	90	360	1,600
13	180	71	525	129	1,500	187	650	245	300	303	110	361	4,750
14	250	72	525	130	180	188	650	246	2,000	304	100	362	9,000
15	170	73	125	131	120	189	425	247	100	305	325	363	6,250
16	650	74	130	132	280	190	160	248	375	306	120	364	400
17	250	75	200	133	240	191	110	249	300	307	280	365	450
18	210	76	1,500	134	250	192	110	250	60	308	190	366	250
19	90	77	7,000	135	300	193	200	251	110	309	250	367	425
20	230	78	20,000	136	400	194	170	252	200	310	130	368	270
21	900	79	2,200	137	140	195	2,100	253	190	311	240	369	180
22	1,000	80	85	138	400	196	1,800	254	525	312	130	370	575
23	1,150	81	400	139	2,100	197	1,800	255	1,000	313	170	371	575
24	1,150	82	650	140	230	198	210	256	950	314	1,250	372	375
25	1,250	83	1,200	141	210	199	220	257	1,000	315	1,700	373	230
26	1,900	84	550	142	270	200	1,400	258	200	316	1,700	374	375
27	7,500	85	1,300	143	140	201	110	259	150	317	625	375	350
28	3,250	86	2,500	144	150	202	110	260	400	318	230	376	400
29	80	87	300	145	250	203	120	261	70	319	700	377	300
30	550	88	2,400	146	230	204	120	262	190	320	600	378	2,400
31	1,700	89	280	147	600	205	500	263	230	321	400	379	675
32	1,100	90	250	148	1,800	206	450	264	280	322	190	380	1,000
33	1,700	91	200	149	150	207	210	265	280	323	325	381	1,000
34	1,000	92	150	150	240	208	500	266	425	324	325	382	1,800
35	625	93	270	151	900	209	675	267	230	325	475	383	700
36	230	94	290	152	1,900	210	575	268	110	326	450	384	1,000
37	170	95	290	153	130	211	400	269	250	327	650	385	1,050
38	1,200	96	280	154	190	212	2,200	270	500	328	900	386	500
39	600	97	180	155	130	213	140	271	450	329	1,900	387	250
40	1,300	98	260	156	290	214	400	272	1,000	330	2,300	388	450
41	675	99	260	157	375	215	180	273	1,000	331	290	389	300
42	3,250	100	270	158	850	216	180	274	1,000	332	350	390	475
43	230	101	280	159	210	217	270	275	1,050	333	375	391	1,700
44	400	102	210	160	2,200	218	90	276	280	334	375	392	650
45	2,700	103	220	161	750	219	170	277	2,100	335	450	393	3,750
46	6,000	104	160	162	4,000	220	180	278	2,100	336	500	394	4,000
47	375	105	270	163	180	221	200	279	500	337	550	395	700
48	250	106	260	164	700	222	140	280	1,350	338	180	396	210
49	475	107	140	165	2,000	223	325	281	5,000	339	240	397	400
50	2,100	108	230	166	675	224	130	282	450	340	200	398	375
51	120	109	170	167	2,000	225	130	283	500	341	240	399	190
52	1,300	110	200	168	160	226	150	284	475	342	300	400	200
53	120	111	270	169	450	227	260	285	1,700	343	150	401	200
54	350	112	260	170	950	228	220	286	1,600	344	180	402	900
55	230	113	240	171	2,100	229	160	287	1,050	345	100	403	140
56	1,150	114	375	172	90	230	250	288	3,250	346	75	404	850
57	1,100	115	290	173	130	231	160	289	3,250	347	250	405	500
58	725	116	290	174	350	232	1,500	290	110	348	350	406	85

The amounts listed reflect the hammer price plus the buyer's premium

PRICES REALIZED • 11.22.2014
 Back of the Book 1875-1978 & Sheets 1857-1957 • Sale 3



Lot#	Realized	Lot#	Realized	Lot#	Realized	Lot#	Realized	Lot#	Realized	Lot#	Realized	Lot#	Realized
406	85	464	70	522	2,500								
407	80	465	100	523	3,000								
408	60	466	200	524	2,500								
409	150	467	150	525	170								
410	210	468	325	526	425								
411	160	469	1,900	527	350								
412	120	470	300	528	200								
413	170	471	425	529	140								
414	80	472	400	530	475								
415	140	473	1,500	531	450								
416	130	474	240	532	80								
417	95	475	1,100	533	8,000								
418	120	476	700	534	8,000								
419	90	477	2,300	535	8,000								
420	150	478	2,200	536	450								
421	200	479	525	537	20,000								
422	95	480	300	538	500								
423	400	481	250	539	500								
424	600	482	180	540	150								
425	1,300	483	170	541	75								
426	170	484	180	542	5,750								
427	140	485	170	543	3,500								
428	250	486	160	544	14,000								
429	725	487	500	545	13,000								
430	400	488	475	546	57,500								
431	250	489	375	547	2,200								
432	240	490	375	548	2,500								
433	210	491	500	549	500								
434	300	492	1,250	550	425								
435	250	493	3,250	551	700								
436	600	494	350	552	220								
437	1,000	495	425	553	210								
438	240	496	425	554	3,250								
439	500	497	300	555	120								
440	220	498	280	556	200								
441	270	499	500	557	1,000								
442	425	500	260	558	160								
443	700	501	240	559	230								
444	250	502	220	560	3,000								
445	120	503	200	561	2,200								
446	200	504	375										
447	270	505	350										
448	800	506	350										
449	100	507	325										
450	240	508	500										
451	625	509	2,600										
452	600	510	2,500										
453	190	511	4,500										
454	100	512	3,250										
455	625	513	675										
456	1,450	514	130										
457	525	515	600										
458	800	516	650										
459	475	517	2,300										
460	290	518	95										
461	170	519	310										
462	65	520	500										
463	1,400	521	500										

The amounts listed reflect the hammer price plus the buyer's premium

Part IV
featuring the King George V “Admiral” Issue 1911-1926
March 6-7, 2015

CANADA - ADMIRALS
1912

Fifty cents
Lathework

Only lathework Type “D” is recorded. All examples are from Plate 3.



5%



10% *Ex - “Lindemann”*



Ex - Reiche

*Only recorded block showing lathework and the Plate 3 inscription.
This information is usually cut off due to its location below the lathework.*